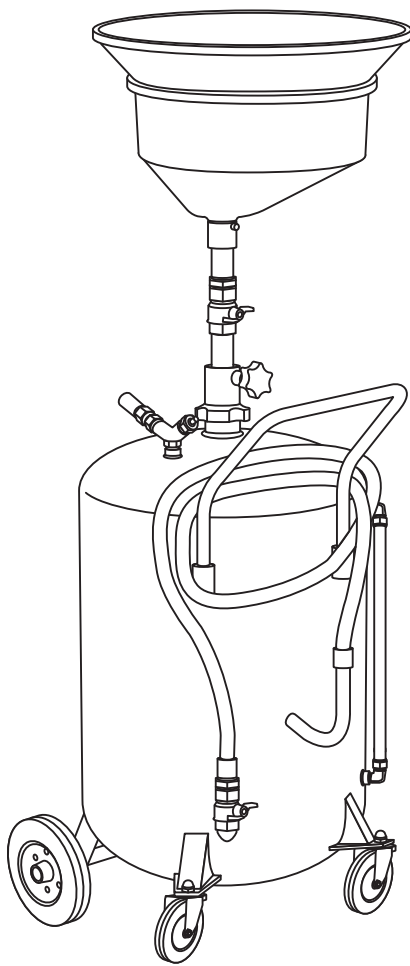


Portable oil drain, self-evacuating

Model 3635



Date of issue	May 2013
Form number	404548
Section	B4
Page	49A

⚠ DANGER

Read manual prior to installation or use of this product. Keep manual nearby for future reference. Failure to follow instructions and safety precautions may result in death or serious injury.

Contents

Safety	3
Explanation of signal words for safety	3
Overview	4
General description and information	4
Damaged equipment	4
Lincoln industrial standard warranty	9

Safety

Read and carefully observe this operating instruction before operating or troubleshooting the system.

The system must be installed, maintained and repaired exclusively by persons familiar with the instructions.

Operate the oil drain only after safety instructions and this guide have been read and are completely understood.

Adequate personal protection must be used to prevent splashing of material on the skin or in the eyes.

Do not misuse, over-pressurize, modify parts, or use worn and/or damaged parts.

Do not use oil drain for flammable or caustic fluids.

Do not exceed 7 psi (0,5 bar) air pressure when emptying the oil drain.

Check each component regularly and replace if worn or damaged.

Verify all connections are tight.

Never modify or alter any component of this product.

Relieve pressure or vacuum before inspecting or servicing.

Any other use not in accordance with instructions will result in loss of claim for warranty or liability.

Failure to comply may result in personal injury and/or damage to equipment.

Explanation of signal words for safety



This is the safety alert symbol. It is used to alert you to potential physical injury hazards. Obey all safety messages that follow this symbol to avoid possible injury or death.



SAFETY INSTRUCTIONS

Safety instruction signs indicate specific safety-related instructions or procedures.



DANGER

Indicates a hazardous situation which, if not avoided, will result in death or serious injury.



WARNING

Indicates a hazardous situation which, if not avoided will result in death or serious injury.



CAUTION

Indicates a hazardous situation which, if not avoided, could result in minor or moderate injury.

Overview

This service page details the procedure that must be followed while operating the pressurized oil drain system.

All required parts, tools, and equipment needed to complete the assembly and operation of the system are defined and listed within this manual.

Review of the manual, parts list and nomenclature is recommended before starting operation.

General description and information

The portable oil drain system is designed to safely capture oil from engine crankcases with the use of a large funnel. After use, the drain is emptied using air pressure.

An external air supply is required to run the drain.

Table 1 lists the specifications of the portable drain system.

Table 2 lists the sub assemblies of the portable drain system.

Do not exceed maximum specification ratings.

Refer to **fig. IPB 1, page 7** for the illustrated parts breakdown of this assembly.

Inspection

Inspect this equipment for damage prior to use that would prevent the equipment from operating as intended.

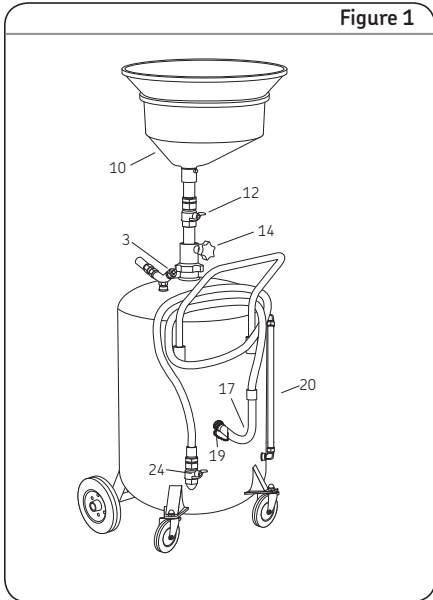
Table 1

Specifications			
Tank size	Holding capacity	Pressure relief valve	Maximum pressure for emptying
24 U.S. gal. (91 liters)	16 U.S. gal. (61 liters)	14 psi (1 bar)	7 psi (0,5 bar)

Table 2

Specifications	
Tank with casters	24 U.S. gal. (91 liters)
Level gauge	Gallons and liters
Discharge hose	79 in. (2 m)
Funnel diameter	15 in. (381 mm)
Extention funnel diameter	22 3/4 in. (578 mm)
Filter screen	
Maximum height (with extention)	79 in. (2 m)
Minimum height (without extention)	50 in. (1,27 m)
Caster	4 in. (101 mm), rubber tread, ball bearing
Wheel	6 in. (152 mm), rubber tread, ball bearing

Figure 1



Damaged equipment

Do not use this system if it appears to be damaged, badly worn or cannot be operated as directed by this user manual.

Any other use not in accordance with instructions will result in loss of claims for warranty and liability.

A listing of authorized warranty and service centers is available upon request.

Operation



Notice

Verify level gauge (20) does not show tank as full before draining engine fluid. For best results, crankcase oil temperature must be at least 158 °F (70 °C).

- 1 Turn valve (3) in a counterclockwise direction to open the vent. This requires to turn the valve approximately 3 to 5 turns.
- 2 Turn knob (14) counterclockwise and raise funnel (10).

WARNING

During storage air pressure may build up in the tank. Always open vent (3) before opening ball valve (12). Failure to open vent (3) may cause oil to spray out of the funnel causing harm to persons and/or property.

- 3 Turn knob (14) clockwise to lock funnel (10) into place.
- 4 Open valve (12) by turning counter-clockwise.
- 5 Drain oil from engine crankcase.
- 6 Close valve (12).
- 7 Lower the funnel (10) by turning the knob (14) counter-clockwise and allow funnel (10) to return to the storage position.
- 8 Move the system to a storage location.

Emptying tank

- 1 Remove the plug (19) from the drain hose J-hook nozzle (17).
- 2 Position the drain hose J-hook nozzle (17) into an appropriate collection container.
- 3 Close valve (12).



WARNING

If valve (12) is not closed, oils will shoot out of the funnel and spray the user.

- 4 Turn valve (3) in clockwise direction to close the vent.



Notice

Connecting air supply to tank before air supply has been turned on allows tank to fill slowly and prevent tank from pressurizing too quickly.



WARNING

Do not exceed 7 psi (0,5 bar)
Failure to comply may result in serious personal injury.

- 5 Set the air supply to a maximum of 7 psi (0,5 bar).
- 6 Connect air supply to valve stem (3) using air chuck/tire inflator.
- 7 Remove air chuck from valve stem (3) when desired flow rate is achieved or if relief valve (4) opens.



Notice

If flow rate stops prior to the tank being empty, repeat step 7.

- 8 After tank is empty, reinsert the plug (19) into the nozzle (17) outlet.

Table 4

Parts list

Item no.	Description	Part no.	Quantity	Item no.	Description	Part no.	Quantity
1	Clip ⁵⁾	278356	1	14	Collar	278378	1
2	Screw ⁵⁾	None	1		Locking knob		
3	Air vent assembly	278569	1		Ring nut		
4	Relief valve, 14 psi (1 bar)	278347	1		End stop		
5	Handle kit ⁴⁾	278362	1		Spring		
6	Tool tray	278346	1		O-ring, 1.0 x 0.14 in. (26,5 x 3,5 mm) ¹⁾		
7	Tank	None	1	15	Wheel kit ³⁾	278352	2
8	Funnel extension	278372	1	16	Caster kit ²⁾	278351	2
9	Funnel screen	278373	1	17	Hose and nozzle	278348	1
10	Funnel	278374	1	18	O-ring 0.62 x 0.94 in. (16 x 2,4 mm) ¹⁾	278349	2
11	Swivel assembly	278375	1	19	Plug and chain	278349	1
12	Ball valve 3/4 in. NPTF	278376	1	20	Level gauge	278350	1
13	Extension tube	278380	1	21	Elbow	278353	2
				22	Adapter	278353	2
				23	Adapter	278354	1
				24	Ball valve 1/2 in. NPT	278534	1
				25	Y adapter	278341	1

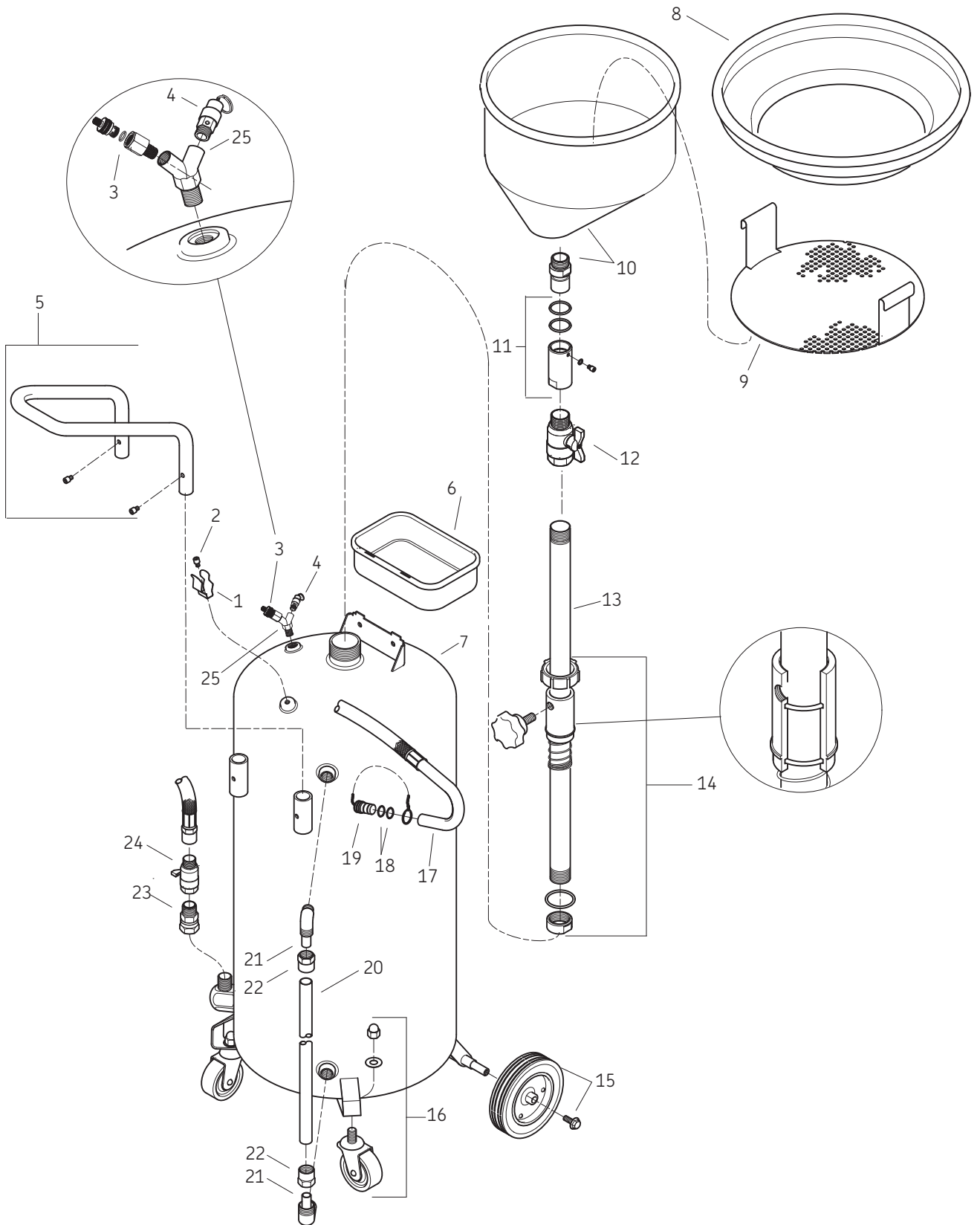
¹⁾ Kit, o-ring 278371

²⁾ Kit, caster 278351

³⁾ Kit, wheel 278352

⁴⁾ Kit, handle includes 2 screws 278362

⁵⁾ Kit, hose clip and screw 278356



Lincoln industrial standard warranty

Standard limited warranty

Lincoln warrants the equipment manufactured and supplied by Lincoln to be free from defects in material and workmanship for a period of one (1) year following the date of purchase, excluding there from any special, extended, or limited warranty published by Lincoln. If equipment is determined to be defective during this warranty period, it will be repaired or replaced, within Lincoln's sole discretion, without charge.

This warranty is conditioned upon the determination of a Lincoln authorized representative that the equipment is defective. To obtain repair or replacement, you must ship the equipment, transportation charges prepaid, with proof of purchase to a Lincoln Authorized Warranty and Service Center within the warranty period.

This warranty is extended to the original retail purchaser only. This warranty does not apply to equipment damaged from accident, overload, abuse, misuse, negligence, faulty installation or abrasive or corrosive material, equipment that has been altered, or equipment repaired by anyone not authorized by Lincoln. This warranty applies only to equipment installed, operated and maintained in strict accordance with the written specifications and recommendations provided by Lincoln or its authorized field personnel.

This warranty is exclusive and is in lieu of any other warranties, express or implied, including, but not limited to, the warranty of merchantability or warranty of fitness for a particular purpose. Warranty on items sold by Lincoln, but not manufactured by Lincoln are subject to the warranty consideration, if any, of their manufacturer (such as hoses, hydraulic and electric motors, electrical controllers, etc.) Assistance in making such warranty claims can be offered as required.

In no event shall Lincoln be liable for incidental or consequential damages. Lincoln's liability for any claim for loss or damages arising out of the sale, resale or use of any Lincoln equipment shall in no event exceed the purchase price. Some jurisdictions do not allow the exclusion or limitation of incidental or consequential damages, therefore the above limitation or exclusion may not apply to you.

This warranty gives you specific legal rights. You may also have other rights that vary by jurisdiction.

Customers not located in the Western Hemisphere or East Asia: Please contact Lincoln GmbH and Co. Kg, Walldorf, Germany, for your warranty rights.

Special limited warranties

Special limited 2 year warranty SL-V series, single injectors–85772, 85782, and replacement injectors–85771, 85781

Lincoln warrants the SL-V Injector series to be free from defects in material and workmanship for two (2) years following the date of purchase. If an injector model (single or replacement) is determined to be defective by Lincoln, in its sole discretion, during this warranty period, it will be repaired or replaced, at Lincoln's discretion, without charge.

Special limited 5 year warranty series 20, 25, 40 bare pumps, pmv bare pumps, heavy duty and 94000 series bare reels

Lincoln warrants series 20, 25, 40 bare pumps, PMV bare pumps, heavy duty (82206), mini bench (81133, 81323), and all 94000 LFR series (single arm and dual arm) bare reels to be free from defects in material and workmanship for five (5) years following the date of purchase. If equipment is determined by Lincoln, in its sole discretion, to be defective during the first year of the warranty period, it will be repaired or replaced at Lincoln's discretion, without charge. In years two (2) and three (3), the warranty on this equipment is limited to repair with Lincoln paying parts and labor only. In years four (4) and five (5), the warranty on this equipment is limited to repair with Lincoln paying for parts only.

Special limited 5 year warranty– limited oil meters, limited fluid control valves, aod (air-operated diaphragm pumps)

Lincoln warrants the 712 series control valves, 912 series lube meters, electronic lube meters (980, 981, 982 series), our universal in line digital meters (812/813 series), and our AOD pump offering to be free from defects in material and workmanship for five (5) years following the date of purchase. If either is determined to be defective by Lincoln, in its sole discretion, during the warranty period, they will be repaired or replaced, at Lincoln's discretion, without charge.

Special DEF (diesel exhaust fluid) limited warranty

DEF products are warranted to be free from defects in material and workmanship for a period of one (1) year following the date of purchase. The following exceptions to the standard warranty period are in effect:

- **85700-30/85700-50 DEF hose reels (bare reel only),** 277251/277252 AC DEF pumps, and 277256 and 277257 DEF meters are warranted for two (2) years from date of purchase.
- **85623 DEF AOD (air operated diaphragm) pumps** are covered under the standard five (5) year AOD pump warranty.

If either is determined to be defective by Lincoln, in its sole discretion, during the warranty period, they will be repaired or replaced, at Lincoln's discretion, without charge.

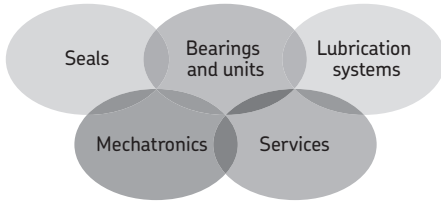
Lincoln Industrial contact information

To find Lincoln Industrial's nearest service center call the following number; customer service 314-679-4200 (international number 01-314-679-4200) or you may also use our website www.lincolnindustrial.com

This page intentionally left blank.

This page intentionally left blank.

This page intentionally left blank.



The Power of Knowledge Engineering

Drawing on five areas of competence and application-specific expertise amassed over more than 100 years, SKF brings innovative solutions to OEMs and production facilities in every major industry worldwide. These five competence areas include bearings and units, seals, lubrication systems, mechatronics (combining mechanics and electronics into intelligent systems), and a wide range of services, from 3-D computer modelling to advanced condition monitoring and reliability and asset management systems. A global presence provides SKF customers uniform quality standards and worldwide product availability.

© SKF is a registered trademark of the SKF Group.

© Lincoln is a registered trademark of Lincoln Industrial Corp.

© SKF Group 2013

The contents of this publication are the copyright of the publisher and may not be reproduced (even extracts) unless prior written permission is granted. Every care has been taken to ensure the accuracy of the information contained in this publication but no liability can be accepted for any loss or damage whether direct, indirect or consequential arising out of the use of the information contained herein.

SKF PUB LS/11 13839 EN · May 2013 · Form 404548

Printed in USA.

LINCOLN

SKF