

Please read and save these instructions. Read through this owner's manual carefully before using product. Protect yourself and others by observing all safety information, warnings, and cautions. Failure to comply with instructions could result in personal injury and/or damage to product or property. Please retain instructions for future reference.



## AIR BLOW AND SUCTION GUN

### FOR CUSTOMER SERVICE

Technical Question?

**CALL 1-866-458-2472**  
customerservice@oem-tools.com

### UNPACKING

After unpacking the unit, inspect carefully for any damage that may have occurred during transit. Check for loose, missing, or damaged parts. If any damage is observed, a shipping damage claim must be filed with the carrier. DO NOT use the OEMTOOLS® 26038 Air Blow and Suction Gun if broken, bent, cracked or damaged parts (including labels) are noted. Any Air Blow and Suction Gun that appears damaged in any way, operates abnormally or is missing parts should be removed from service immediately. If you suspect that the Air Blow and Suction Gun was subjected to shock load (a load that was dropped suddenly, unexpectedly, etc.) Immediately discontinue use until it has been checked by a factory authorized service center.



### ⚠ WARNING

The following safety information is provided as a guideline to help you operate your Air Blow and Suction Gun under the safest possible conditions. Any tool or piece of equipment can be potentially dangerous to use when safety or safe handling instructions are not known or not followed. The following safety instructions are to provide the user with the information necessary for safe use and operation. Please read and retain these instructions for the continued safe use of your Air Blow and Suction Gun. Failure to follow instructions listed below may result in serious injury. In addition, make sure that anyone who uses the equipment understands and follows these safety instructions as well.

### Explanation of Safety Signal Words

**⚠WARNING:** Indicates a potentially hazardous situation which, if not avoided, could result in death or serious injury.

**⚠CAUTION:** Indicates a potentially hazardous situation which, if not avoided, may result in minor or moderate injury.

**CAUTION:** Used without the safety alert symbol indicates a potentially hazardous situation which, if not avoided, may result in property damage.

**NOTES:** Provide clarity and helpful information.

Thank you very much for choosing an OEMTOOLS® Product!

For future reference, please register your new tool at [www.oem-tools.com](http://www.oem-tools.com) and complete the owner's record below:

**Model:** \_\_\_\_\_ **Purchase Date:** \_\_\_\_\_

Save the receipt, warranty and these instructions. It is important that you read the entire manual to become familiar with this product before you begin using it. This product is designed for certain applications only. OEMTOOLS® cannot be responsible for issues arising from modification. We strongly recommend that this product is not modified and/or used for any application other than that for which it was designed. If you have any questions relative to a particular application, DO NOT use the product until you have first contacted customer service to determine if it can or should be performed on the product.

**⚠WARNING:** Pursuant to California Proposition 65, this product contains chemicals known to the state of California to cause cancer and birth defects or other reproductive harm. Wash hands after handling.



# AIR BLOW AND SUCTION GUN

## **! IMPORTANT INSTRUCTIONS AND SAFETY RULES**

1. Know your tool. Read this manual carefully. Learn the tool's applications and limitations, as well as potential hazards specific to it.
2. Keep work area clean and well lit. Cluttered or dark work areas invite accidents.
3. Keep children away. All children should be kept away from the work area. Never let a child handle a tool without strict adult supervision.
4. DO NOT operate this tool if under the influence of alcohol or drugs. Read warning labels on prescriptions to determine if your judgment or reflexes are impaired while taking drugs. If there is any doubt, DO NOT attempt to operate.
5. Use safety equipment. Eye protection should be worn at all times when operating this tool. Use ANSI approved safety glasses. Everyday eyeglasses are NOT safety glasses. Dust mask, non-skid safety shoes, hard hat or hearing protection should be used in appropriate conditions.
6. Wear proper apparel. Loose clothing, gloves, neck-ties, rings, bracelets or other jewelry may present a potential hazard when operating this tool. Keep all apparel clear of the tool.
7. DO NOT overreach. Keep proper footing and balance at all times when operating this tool.
8. Check for damage. Check your tool regularly. If part of the tool is damaged, it should be carefully inspected to make sure that it can perform its intended function correctly. If in doubt, the part should be repaired. Refer all servicing to a qualified technician. Consult your dealer for advice.
9. Keep away from flammables. DO NOT attempt to operate this tool near flammable materials or combustibles. Failure to comply may cause serious injury or death.
10. Store idle tools out of the reach of children and untrained persons. Tools may be dangerous in the hands of untrained users.
11. Maintain tools with care.
12. Keep tools dry and clean.
13. Properly maintained tools are less likely to bind and are easier to control. DO NOT use a damaged tool. Tag damaged tools "DO NOT use" until repaired.
14. Check for misalignment or binding of moving parts, breakage of parts, and any other condition that may affect the tool's operation.
15. If damaged, have the tool serviced before using. Many accidents are caused by poorly maintained tools.
16. Use only accessories that are recommended by the manufacturer for your model. Accessories that may be suitable for one tool may become hazardous when used on another tool.
17. Tool service must be performed only by qualified repair personnel. Service or maintenance performed by unqualified personnel could result in a risk of injury.
18. When servicing a tool, use only identical replacement parts. Use of unauthorized parts or failure to follow maintenance instructions may create a risk of injury.
19. Maintain a safe working environment. Keep the work area well lit. Make sure there is adequate surrounding workspace. Keep the work area free of obstructions, grease, oil, trash, and other debris. DO NOT use this product in a damp or wet location.
20. Maintain labels and nameplates on this product. These carry important information. If unreadable or missing, contact OEMTOOLS® for a replacement.

21. Keep the handle dry, clean, and free from brake fluid, oil, and grease.
22. Before use, read and understand all warnings, safety precautions, and instructions as outlined in the vehicle manufacturer's service manual. It is beyond the scope of this manual to properly describe the correct procedure and test data for each vehicle.
23. The warnings, precautions, and instructions discussed in this manual cannot cover all possible conditions and situations that may occur. The operator must understand that common sense and caution are factors which cannot be built into this product, but must be supplied by the operator.
24. We believe the information contained herein to be reliable. However, general technical information is given by us without charge and the user shall employ such information at their own discretion and risk. We assume no responsibility for results or damages incurred from the use of such information in whole or in part. Always refer to specific instructions and technical information supplied by vehicle manufacturer.
25. The manufacturer declines any and all responsibility for damage to vehicles or components if said damage is the result of unskillful handling by the operator or of failure to observe the basic safety rules set forth in the instruction manual.
26. The procedures documented in this manual are to serve as guidelines for the use of this equipment.

### PRODUCT DESCRIPTION

The OEMTOOLS® Air and Blow Suction Gun was developed for quick and easy clean up, designed with a one touch button that will change the gun from blow to suction mode.

### PRODUCT SPECIFICATIONS

<b>Maximum Air Pressure</b>	90 psig, 6.2 bar
<b>Air Consumption</b>	3.36 CFM
<b>Air Inlet Thread Size</b>	1/4" PT(NPT)
<b>Recommended Hose Size</b>	3/8"
<b>Suction Power</b>	9 cmHg (with dust bag)
<b>Minimum Hose Size</b>	5/16" I.D.
<b>Sound Pressure Level</b>	97 dBA
<b>Vibration</b>	0.4m/s2
<b>Length</b>	5.7"
<b>Weight</b>	0.88 Lb.

### CONTENTS

Housing Assembly (1), Deflector (1), Dust Bag (1), Clamp Ring (1), Extension Tube (1), Flexible Hose Assembly (1), Small Diameter Vacuum (1), Flat Tube (1), Brush (1)





# AIR BLOW AND SUCTION GUN

## SPECIFIC SAFETY INSTRUCTIONS AND WARNINGS

**⚠️WARNING** FAILURE TO OBSERVE THESE WARNINGS COULD RESULT IN INJURY. This instruction manual contains important safety information. Read this instruction manual carefully and understand all information before operating this tool.

Some dust created by power sanding, sawing, grinding, drilling, and other construction activities contains chemicals known to cause cancer, birth defects or other reproductive harm. Some examples of these chemicals are:

- lead from lead-based paints
- crystalline silica from bricks and cement and other masonry products
- arsenic and chromium from chemically-treated lumber

Your risk from these exposures varies, depending on how often you do this type of work. To reduce your exposure to these chemicals, work in a well ventilated area and work with approved safety equipment, such as those dust masks that are specially designed to filter out microscopic particles.

### ⚠️WARNINGS

1. Always operate, inspect and maintain this tool in accordance with American National Standards Institute Safety Code of Portable Air Tools (ANSIB186.1) and any other applicable safety codes and regulations.
2. For safety, top performance and maximum durability of parts, operate this tool at 90 psig; 6.2 bar max air pressure with 5/16" diameter air supply hose.
3. Always wear impact-resistant eye and face protection when operating or performing maintenance on this tool. Always wear hearing protection when using this tool.
4. High sound levels can cause permanent hearing loss. Use hearing protection as recommended by your employer or OSHA regulation.
5. Keep the tool in efficient operating condition.
6. Operators and maintenance personnel must be physically able to handle the bulk, weight and power of this tool.
7. Air under pressure can cause severe injury. Never direct air at yourself or others. Always turn off the air supply, drain hose of air pressure and detach tool from air supply before installing, removing or adjusting any accessory on this tool, or before performing any maintenance on this tool. Failure to do so could result in injury. Whip hoses can cause serious injury. Always check for damaged, frayed or loose hoses and fittings, and replace immediately. DO NOT use quick detach couplings at tool. See instructions for correct set-up.
8. Air powered tools can vibrate during use. Vibration, repetitive motions or uncomfortable positions over extended periods of time may be harmful to your hands and arms. Discontinue use of tool if discomfort, tingling feeling or pain occurs. Seek medical advice before resuming use.
9. Place the tool on the work before starting the tool.
10. DO NOT indulge in any horseplay with this tool.
11. Slipping, tripping and/or falling while operating air tools can be a major cause of serious injury or death. Be aware of excess hose left on the walking or work surface.
12. Keep body working stance balanced and firm. DO NOT over reach when operating the tool.
13. Anticipate and be alert for sudden changes in motion during start up and operation of any power tool.

14. DO NOT carry tool by the hose. Protect the hose from sharp objects and heat.
15. Tool shaft may continue to rotate briefly after throttle is released. Avoid direct contact with accessories during and after use. Gloves will reduce the risk of cuts or burns.
16. Keep away from rotating end of tool. DO NOT wear jewelry or loose clothing. Secure long hair. Scalping can occur if hair is not kept away from tool and accessories. Choking can occur if neck wear is not kept away from tool and accessories.
17. DO NOT use near flammable material, such as gas tanks.
18. DO NOT vacuum any liquids.
19. Take care that the exhaust air does not point towards any other person or material or substance that could be contaminated by oil droplets. When first lubricating a tool or if the tool exhaust has a high oil content DO NOT allow the exhaust air to come near very hot surfaces or flames.
20. This tool is not suitable for underwater use or use in explosive environments.
21. DO NOT lubricate tools with flammable or volatile liquids such as kerosene, diesel or jet fuel.
22. DO NOT remove any labels. Replace any damaged labels.
23. Use accessories recommended by OEMTOOLS®.

## OPERATION INSTRUCTIONS

**⚠️CAUTION:** To operate as a blow gun, remove end cap, remove and reverse the position of the valve. Always ensure that the o-rings are replaced properly.

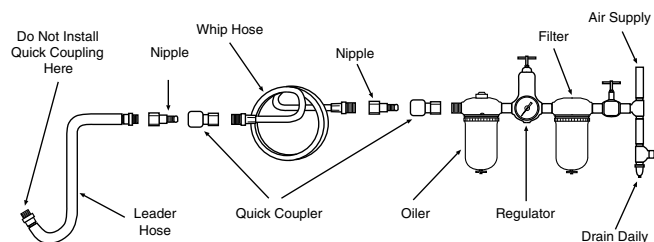
Factors outside the tool may cause loss of power or erratic action. Reduced compressor output, excessive drain on the air line, moisture or restrictions in air pipes or the use of hose connections of improper size or poor condition may reduce air supply. Grit or gum deposits in the tool may cut power and may be corrected by cleaning the air strainer and flushing out the tool with gum solvent oil or an equal mixture of SAE #10 oil and kerosene. If outside conditions are in order and the tool continues erratic action or low power, disconnect tool from hose and take tool to your nearest authorized service center.

## AIR SUPPLY

Tools of this class operate on a wide range of air pressures. It is recommended that air pressure of these tools measures 90 psi at the tool while running free. Higher pressure (over 90 psig; 6.2 bar) raises performance beyond the rated capacity of the tool, which will shorten tool life because of faster wear and could cause injury.

Always use clean, dry air. Dust, corrosive fumes and/or water in the air line will cause damage to the tool. Drain the air tank daily. Clean the air inlet filter screen on at least a weekly schedule. The recommended hookup procedure can be viewed in the below figure.

The air inlet used for connecting air supply has standard 1/4" NPT. Line pressure should be increased to compensate for unusually long air hoses (over 25 feet). Minimum hose diameter should be 5/16" I.D. and fittings should have the same inside dimensions and be tightly secured.



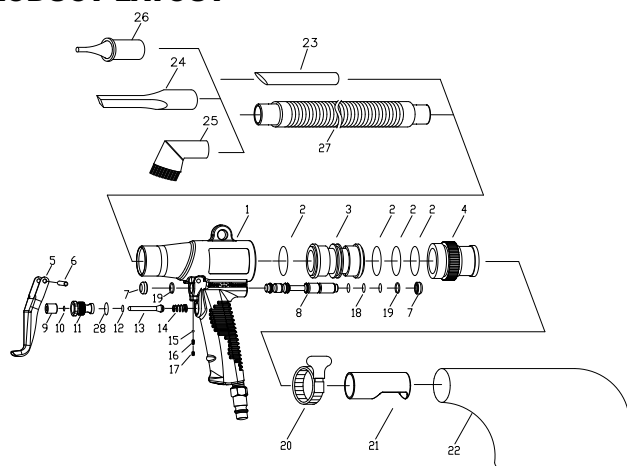


# AIR BLOW AND SUCTION GUN

## TROUBLESHOOTING

Description	Inspection	Daily	Weekly
Check the condition of air line accessories, and drain out the water from the separators and air line to keep the air supply system of air line clean and dry.		*	
Always keep the air pressure at 90 psi (6.3kg/cm2) for maximum tool performance and take your reading while the tool is running.	90 psi	*	*
Use proper couplers, nipples, hoses, pipes and fittings.		*	*
Check that quick change couplers are in secure connection and good order.		*	*
Keep tools properly lubricated to prevent wear and rust.		*	
Always use safety goggles or a face shield when operating air tools. Never wear loose clothing that might get caught in the tool and cause injuries.		*	
While installing ship hoses or quick coupler directly into the tool, use a liquid pipe sealant to prevent damage to the housing from damage. (do not use Teflon tape)		*	
Always use proper wheel and pad for sanding and keep the secure connector in good order		*	*
Never use a sander as a grinder. Sanders are intended for sanding only.		*	
Always use accessories with a rated speed equal to or greater than the sander's speed.		*	*

## PRODUCT LAYOUT



## PARTS LIST

Figure	Description	Qty.	Figure	Description	Qty.
1	Housing	1	15	Steel Ball (1/8")	1
2	O-Ring (AS123)	4	16	Spring	1
3	Valve	1	17	Screw (M4*4)	1
4	End Cap	1	18	O-Ring (AS010)	3
5	Trigger	1	19	Ring (ISTW-8)	2
6	Pin (4*22)	1	20	Clamping Ring	1
7	Cap	2	21	Deflector	1
8	Regulator Knob	1	22	Dust Bag	1
9	Cover	1	23	Extension Tube	1
10	O-Ring (P4)	1	24	Flat Tube	1
11	Valve Seat	1	25	Brush	1
12	O-Ring (P6)	1	26	Small Tube	1
13	Valve Stem	1	27	Flexible Hose	1
14	Spring	1	28	O-Ring (SM009)	1

## OEMTOOLS® LIMITED LIFETIME WARRANTY

For as long as you own this OEMTOOLS® product, if you find any defect in material or workmanship, through normal usage, return it to the place of purchase or to OEMTOOLS® for repair or replacement at our discretion. In order to obtain this service, send your tool and proof of purchase (transportation pre-paid) to: OEMTOOLS® Q.A. Dept., 3580 E. Raines Road #3, Memphis, TN 38118.

We will not be responsible for lost or damaged goods during transportation; please insure your package. If our inspection verifies the defect, we will repair or replace the product, or we may elect to refund the purchase price if we cannot readily and quickly provide you with a replacement. We will return repaired products at our expense, but if we determine there is no defect, or that the defect resulted from causes not within the scope of our warranty, then you must bear the cost of returning the product.

OEMTOOLS® does not provide warranty for products labeled other than OEM® or OEMTOOLS®. OEMTOOLS® will not provide any warranty for products subjected to abnormal use. Abnormal use includes (but is not limited to) abuse, accident, alteration, neglect, and unauthorized or unreasonable use or repairs. This warranty does not cover bits, blades, files, batteries, or calibration. We recommend that you maintain your tools and sharpen or replace blades, bits, files, and batteries as necessary. OEMTOOLS® reserves the right to make any changes in construction or design at any time without any obligation in incorporating such changes to tools or equipment previously sold.

OEMTOOLS® makes every effort to ensure that its products meet high quality and durability standards, and warrants to the original purchaser that this product is free from defects in materials and workmanship. This warranty does not apply to damage due directly or indirectly to misuse, abuse, negligence or accidents, repairs or alterations outside our facilities, criminal activity, improper installation, normal wear and tear, or to lack of maintenance.

We shall in no event be liable for death, injuries to persons or property, or for incidental, contingent, special or consequential damages arising from the use of our product. Some states do not allow the exclusion or limitation of incidental or consequential damages, so the above limitation of exclusion may not apply to you. THIS WARRANTY IS EXPRESSLY IN LIEU OF ALL OTHER WARRANTIES, EXPRESS OR IMPLIED, INCLUDING THE WARRANTIES OF MERCHANTABILITY AND FITNESS. This warranty gives you specific legal rights, and you may also have other rights, which vary from state to state.

Don't forget to register your new OEMTOOLS® product at [www.oem-tools.com](http://www.oem-tools.com).

## CONTACT US

3580 E. Raines Road, Suite 3, Memphis, TN 38118  
 Tel: 1-866-458-2472  
[www.oem-tools.com](http://www.oem-tools.com)

