

Please read and save these instructions. Read through this owner's manual carefully before using product. Protect yourself and others by observing all safety information, warnings, and cautions. Failure to comply with instructions could result in personal injury and/or damage to product or property. Please retain instructions for future reference.



5 SPEED MINI DRILL PRESS

FOR CUSTOMER SERVICE

Technical Question?

CALL 1-866-458-2472
customerservice@oem-tools.com

UNPACKING

After unpacking the unit, inspect carefully for any damage that may have occurred during transit. Check for loose, missing, or damaged parts. If any damage is observed, a shipping damage claim must be filed with the carrier. DO NOT use the OEMTOOLS™ 24991 5 Speed Mini Drill Press if broken, bent, cracked or damaged parts (including labels) are noted. Any Drill Press that appears damaged in any way, operates abnormally or is missing parts should be removed from service immediately. If you suspect that the Drill Press was subjected to shock load (a load that was dropped suddenly, unexpectedly, etc.), immediately discontinue use until it has been checked by a factory authorized service center.



⚠ WARNING

The following safety information is provided as a guideline to help you operate your 5 Speed Mini Drill Press under the safest possible conditions. Any tool or piece of equipment can be potentially dangerous to use when safety or safe handling instructions are not known or not followed. The following safety instructions are to provide the user with the information necessary for safe use and operation. Please read and retain these instructions for the continued safe use of your 5 Speed Mini Drill Press. Failure to follow instructions listed below may result in serious injury. In addition, make sure that anyone who uses the equipment understands and follows these safety instructions as well.

Explanation of Safety Signal Words

⚠ WARNING: Indicates a potentially hazardous situation which, if not avoided, could result in death or serious injury.

⚠ CAUTION: Indicates a potentially hazardous situation which, if not avoided, may result in minor or moderate injury.

CAUTION: Used without the safety alert symbol indicates a potentially hazardous situation which, if not avoided, may result in property damage.

NOTES: Provide clarity and helpful information.

Thank you very much for choosing an OEMTOOLS™ Product!

For future reference, please register your new tool at www.oem-tools.com and complete the owner's record below:

Model: _____ Purchase Date: _____

Save the receipt, warranty and these instructions. It is important that you read the entire manual to become familiar with this product before you begin using it. This product is designed for certain applications only. OEMTOOLS™ cannot be responsible for issues arising from modification. We strongly recommend that this product is not modified and/or used for any application other than that for which it was designed. If you have any questions relative to a particular application, DO NOT use the product until you have first contacted customer service to determine if it can or should be performed on the product.



5 SPEED MINI DRILL PRESS

! IMPORTANT INSTRUCTIONS AND SAFETY RULES

1. Know your product. Read this manual carefully. Learn the product's applications and limitations, as well as potential hazards specific to it.
2. Keep work area clean and well lit. Cluttered or dark work areas invite accidents.
3. Keep children away. All children should be kept away from the work area. Never let a child handle this product without strict adult supervision.
4. DO NOT operate this product if under the influence of alcohol or drugs. Read warning labels on prescriptions to determine if your judgment or reflexes are impaired while taking drugs. If there is any doubt, DO NOT attempt to operate.
5. Use safety equipment. Eye protection should be worn at all times when operating this product. Use ANSI approved safety glasses. Everyday eyeglasses are NOT safety glasses. Dust mask, non-skid safety shoes, hard hat or hearing protection should be used in appropriate conditions.
6. Wear proper apparel. Loose clothing, gloves, neck-ties, rings, bracelets or other jewelry may present a potential hazard when operating this product. Keep all apparel clear of the product.
7. DO NOT overreach. Keep proper footing and balance at all times when operating this product.
8. Check for damage. Check your product regularly. If part of the product is damaged, it should be carefully inspected to make sure that it can perform its intended function correctly. If in doubt, the part should be repaired. Refer all servicing to a qualified technician. Consult your dealer for advice.
9. Keep away from flammables. DO NOT attempt to operate this product near flammable materials or combustibles. Failure to comply may cause serious injury or death.
10. Store idle product out of the reach of children and untrained persons. This product may be dangerous in the hands of untrained users.
11. Maintain product with care.
12. Keep product dry and clean.
13. DO NOT use a damaged product. Tag damaged products "DO NOT USE" until repaired.
14. Check for misalignment or binding of moving parts, breakage of parts, and any other condition that may affect the product's operation.
15. Use only accessories that are recommended by the manufacturer for your model. Accessories that may be suitable for one product may become hazardous when used on another product.
16. If damaged, have the product serviced before using. Many accidents are caused by poorly maintained products.
17. Product service must be performed only by qualified repair personnel. Service or maintenance performed by unqualified personnel could result in a risk of injury.
18. When servicing a product, use only identical replacement parts. Use of unauthorized parts or failure to follow maintenance instructions may create a risk of injury.
19. Maintain a safe working environment. Keep the work area well lit. Make sure there is adequate surrounding workspace. Keep the work area free of obstructions, grease, oil, trash, and other debris. DO NOT use this product in a damp or wet location.
20. Maintain labels and nameplates on this product. These carry important information. If unreadable or missing, contact OEMTOOLS™ for a replacement.
21. Avoid accidental fire and/or explosion. DO NOT smoke near engine fuel and battery components.
22. We believe the information contained herein to be reliable. However, general technical information is given by us without charge and the user shall employ such information at their own discretion and risk. We assume no responsibility for results or damages incurred from the use of such information in whole or in part. Always refer to specific instructions and technical information supplied by the vehicle manufacturer.

SPECIFIC SAFETY INSTRUCTIONS AND WARNINGS

⚠ WARNING: Read and understand all instructions. Failure to follow all instructions listed below may result in electric shock, fire and/or serious injury.

⚠ WARNING: For your own safety, DO NOT attempt to operate your mini drill press until it is completely assembled and installed according to the manual.

1. DO NOT use your tool where there is a risk of causing a fire or an explosion; e.g. in the presence of flammable liquids, gases, or dust. Power tools create sparks, which may ignite the dust or fumes.
 2. Keep children and bystanders away while operating a power tool. Distractions can cause you to lose control, so visitors should remain at a safe distance from the work area.
 3. Be aware of all power lines, electrical circuits, water pipes and other mechanical hazards in your work area, particularly those hazards below the work surface hidden from the operator's view that may be unintentionally contacted and may cause personal harm or property damage.
 4. Be alert of your surroundings. Using power tools in confined work areas may put you dangerously close to cutting tools and rotating parts.
- ⚠ WARNING:** Always check to ensure the power supply corresponds to the voltage on the rating plate.
5. DO NOT abuse the power cord. Never carry a portable tool by its power cord, or yank tool or extension cords from the receptacle. Keep power and extension cords away from heat, oil, sharp edges or moving parts. Replace damaged cords immediately. Damaged cords may cause a fire and increase the risk of electric shock.
 6. Grounded tools must be plugged into an outlet properly installed and grounded in accordance with all codes and ordinances. Never remove the grounding prong or modify the plug in any way. DO NOT use any adapter plugs. Check with a qualified electrician if you are in doubt as to whether the outlet is properly grounded.
 7. Double insulated tools are equipped with a polarized plug (one blade is wider than the other). This plug will fit in a polarized outlet only one way. If the plug does not fit fully in the outlet, reverse the plug. If it still doesn't fit, contact a qualified electrician to install a polarized outlet. DO NOT change the plug in any way.
 8. Avoid body contact with grounded surfaces such as pipes, radiators, ranges, and refrigerators. There is an increased risk of electric shock if your body is grounded.
 9. When operating a power tool outside, use an outdoor extension cord marked "W-A" or "W." These cords are rated for outdoor use and reduce the risk of electric shock.
 10. DO NOT expose power tools to rain or wet conditions. Water entering a power tool will increase the risk of electric shock.
 11. DO NOT let your fingers touch the terminals of plug when inserting into or removing from the outlet.
 12. Ground fault circuit interrupters. If work area is not equipped with a permanently installed Ground Fault Circuit Interrupter outlet (GFCI), use a plug-in GFCI between power tool or extension cord and power receptacle.
 13. Stay alert, watch what you are doing and use common sense when operating a power tool. DO NOT use a power tool while you are tired or under the influence of drugs, alcohol or medication. A moment of inattention while operating power tools may result in serious personal injury.
 14. Dress properly. DO NOT wear loose clothing, dangling objects, or jewelry. Keep your hair, clothing and gloves away from moving parts. Loose clothes, jewelry or long hair can be caught in moving parts. Air vents often cover moving parts and should be avoided.
 15. Use safety apparel and equipment. Use safety goggles or safety glasses with side shields which comply with current national



5 SPEED MINI DRILL PRESS

- standards or, when needed, a face shield. Use a dust mask in dusty work conditions. This applies to all persons in the work area. Also use non-skid safety shoes, hard hat, gloves, dust collection systems, and hearing protection when appropriate.
16. Avoid accidental starting. DO NOT carry the power tool with your finger on the switch. Ensure the switch is in the Off position before plugging tool into power outlet. In the event of a power failure, while a tool is being used, turn the switch Off to prevent surprise starting when power is restored.
 17. DO NOT overreach. Keep proper footing and balance at all times.
 18. Remove adjusting keys or wrenches before connecting to the power supply or turning on the tool. A wrench or key that is left attached to a rotating part of the tool may result in personal injury.
 19. Never place your fingers in a position where they could contact the drill or other cutting tool if the workpiece should unexpectedly shift or if your hand should slip.
 20. Whenever possible, position the workpiece to contact the left side of the column if it is too short or the table is tilted; clamp solidly to the table. Use table slots or clamping ledge around the outside edge of the table.
 21. When using a drill press vise, always fasten it to a table.
 22. Never climb on or allow others to climb on the drill press table; it could break or pull the entire drill press down.
 23. Turn the motor switch Off and put away the Switch Key when leaving the drill press.
 24. To avoid injury from thrown work or tool contact, DO NOT perform layout, assembly, or setup work on the table while the cutting tool is rotating.
 25. DO NOT force the tool. Tools do a better and safer job when used in the manner for which they are designed. Plan your work, and use the correct tool for the job.
 26. Never use a tool with a malfunctioning switch. Any power tool that cannot be controlled with the switch is dangerous and must be repaired by an authorized service representative before using.
 27. Disconnect power from tool and place the switch in the locked or Off position before servicing, adjusting, installing accessories or attachments, or storing. Such preventive safety measures reduce the risk of starting the power tool accidentally.
 28. Secure work with clamps or a vise instead of your hand to hold work when practical. This safety precaution allows for proper tool operation using both hands.
 29. Store idle tools. When tools are not in use, store them in a dry, secure place out of the reach of children. Inspect tools for good working condition prior to storage and before re-use.
 30. Use only accessories that are recommended by the manufacturer for your model. Accessories that may be suitable for one tool may create a risk of injury when used on another tool.
 31. Keep guards in place and in working order.
 32. Your mini drill press must be bolted securely to a workbench. If there is any tendency for your mini drill press to move during certain operations, bolt the workbench to the floor.
 33. This mini drill press is intended for use in dry conditions, indoor use only.
 34. Always keep hands out of the path of a drill bit. Avoid awkward hand positions where a sudden slip could cause your hand to move into the drill bit.
 35. DO NOT install or use any drill bit that exceeds 175 mm (7") in length or extends 150 mm (6") below the chuck jaws. They can suddenly bend outward or break.
 36. DO NOT use wire wheels, router bits, shaper cutters, circle (fly) cutters, or rotary planers on this mini drill press.
 37. When cutting a large piece of material, make sure it is fully supported at the table height.
 38. DO NOT perform any operation freehand. Always hold the workpiece firmly against the table so it will not rock or twist. Use clamps or a vise for unstable workpieces.
 39. Make sure there are no nails or foreign objects in the part of the workpiece to be drilled.
 40. DO NOT touch the bit or chips. Drill bits and cuttings are hot immediately after drilling.
 41. Never reach around or under the working head, or grab the chuck key to stop the drill press.
 42. Make sure the drill press speed is appropriate for both the type of material and bit size you are using.
 43. Clamp workpiece or brace against the left side of the column to prevent rotation. If it is too short or the table is tilted, clamp solidly to the table and use the fence provided.
 44. If the workpiece overhangs the table such that it will fall or tip if not held, clamp it to the table. Provide auxiliary support.
 45. Make sure all clamps and locks are firmly tightened before drilling.
 46. Securely lock the head and table support to the column, and the table to the table support before operating the mini drill press.
 47. Never turn your mini drill press on before clearing the table of all objects (tools, scraps of wood, etc.).
 48. Before starting the operation, jog the motor switch to make sure the drill bit does not wobble or vibrate.
 49. Let the spindle reach full speed before starting to drill. If your mini drill press makes an unfamiliar noise or if it vibrates excessively, stop immediately, turn the mini drill press off and unplug. DO NOT restart until the problem is corrected.
 50. DO NOT perform layout assembly or set up work on the table while the mini drill press is in operation.
 51. Make sure the spindle has come to a complete stop before touching the workpiece.
 52. To avoid injury from accidental starting, always turn the switch Off and unplug the mini drill press before installing or removing any accessory or attachment or making any adjustment.
 53. Keep guards in place and in working order.
 54. Only use the self-ejecting type chuck key as provided with the mini drill press.
 55. DO NOT try to drill material that is too small to be securely held.
 56. Use the mini drill press in a well-lit area and on a level surface clean and smooth enough to reduce the risk of trips, slips, or falls. Use it where neither the operator nor a casual observer is forced to stand in line with a potential kickback.
 57. Never leave tool running unattended.
- NOTE:** The manufacturer declines any and all responsibility for damage to workshop or components if said damage is the result of unskillful handling by the operator or of failure to observe the basic safety rules set forth in the instruction manual.
- ⚠WARNING:** Carefully read Rules for Safe Operation and Instructions.
- ### IMPORTANT SAFETY INSTRUCTIONS
- The warnings, precautions, and instructions discussed in this manual cannot cover all possible conditions and situations that may occur. The operator must understand that common sense and caution are factors which cannot be built into this product but must be supplied by the operator.
- ### PRODUCT DESCRIPTION
- This OEMTOOLS™ 5 Speed Mini Drill Press is an ideal addition to any workshop. With an overall height of less than two feet, the mini drill press is easy to store. This unit is great for home craftsmen or small production operators who need the extra power, accuracy and trueness that a hand drill can't provide.



5 SPEED MINI DRILL PRESS

PRODUCT SPECIFICATIONS

5 SPEED 1/3 HP 1700 RPM MOTOR	
DRILLING DEPTH	2"
CHUCK SIZE	1/16" - 1/2"
SPINDLE TO TABLE DISTANCE	9"
SPINDLE TO BASE DISTANCE	11-3/4"
SWING	8"
DIMENSIONS	18 1/2" (L) x 9-1/2" (W) x 14" (H)
WEIGHT	37.5 Lbs.

RANGE OF SPINDLE SPEEDS

Motor Speed		Spindle Speeds (min ⁻¹)				
50 Hz	1400 min ⁻¹	500	890	1400	1900	2500
60 Hz	1700 min ⁻¹	620	1100	1720	2340	3100

UNPACKING

1. Separate all parts from packaging materials and check each of the following items to make sure all items are accounted for before discarding any packing material.

Figure	Description	Quantity
A	Head Arm	1
B	Column Support Arm	1
C	Owner's Manual	1
D	Box of Loose Parts	1
E	Bag of Loose Parts	1
F	Base	1
G	Table/Support Arm	1

2. Remove the protective oil that is applied to the table and column. Use any ordinary household type grease and spot remover.
3. Apply a coat of paste wax to the table and column to prevent rust. Wipe all parts thoroughly with a clean dry cloth.

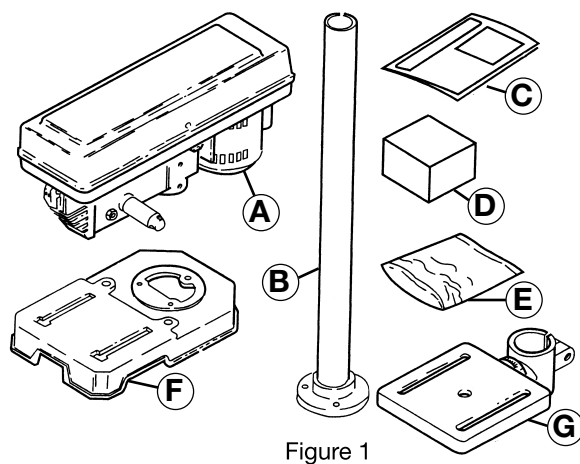


Figure 1

LIST OF LOOSE PARTS IN THE BOX AND BAGS

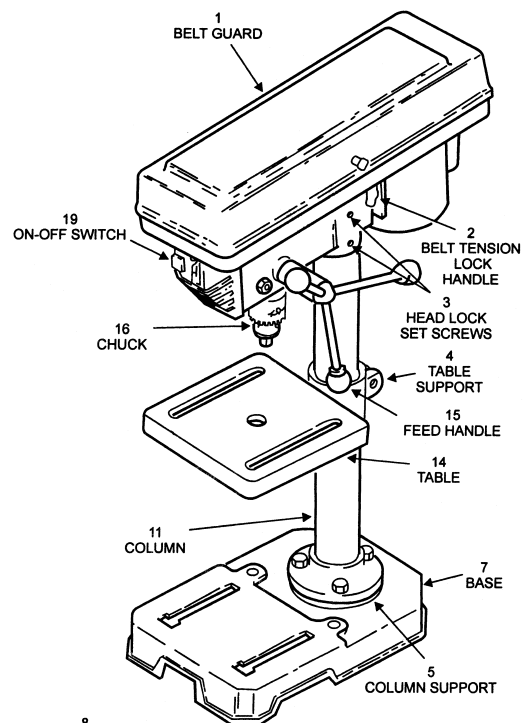
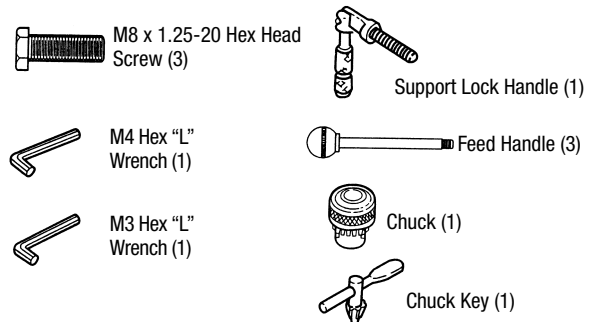


Figure 2

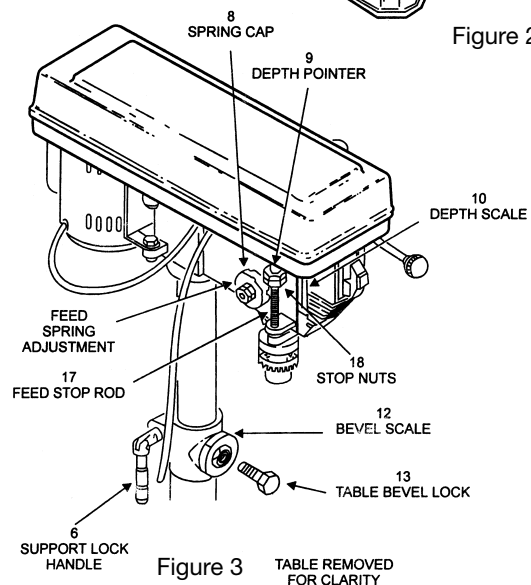


Figure 3

TABLE REMOVED FOR CLARITY



5 SPEED MINI DRILL PRESS

ASSEMBLY

1. Install (3) M8 x 20 bolts in each hole through Column Support and base and tighten with wrench.
2. Slide table/support into column.
3. Install support lock handle from left side into table support and tighten by hand.
4. Lift head above column and slide it onto the column as far as possible. Align head with table and base. Using a 4 mm Hex "L" wrench, tighten the head lock set screws on the head.
5. Screw the feed handles into the threaded holes in the hub and tighten.
6. Clean out the tapered hole in the chuck. Clean the spindle nose with a clean cloth. Push the chuck up on the spindle nose as far as possible. Lightly tap the nose of the chuck with a piece of wood to ensure proper fitting of the chuck on the spindle.
7. Install M5 x 12 pan HD screw in hole located in guard and attach knob, turning it until it is tight.
8. Choose speed for drilling operation, and install belt to correct position for desired speed. Loosen belt tension lock handle and turn the motor counter-clockwise to apply tension to the belt. Tighten belt tension lock handle.

OPERATION

1. Before using this machine, the operator should carefully read over this operation manual to acquaint himself with the construction, controls and driving system of the machine.
2. All of the Ball Bearings are packed with grease at the factory. They require no further lubrication. Periodically lubricate the grooves in the spindle and the rack (teeth of the quill).
3. Install drill into chuck far enough to obtain maximum gripping of the chuck jaws. Make sure that the drill is centered in the chuck. Tighten the drill sufficiently, so that it does not slip while drilling. Turn the chuck key clockwise to tighten, counter-clockwise to loosen the drill bit.
4. The drilling depth may be controlled by the pointer and depth scale or by the two stop nuts, on the feed stop rod.
5. To position the table, loosen the support lock handle, move the table to the desired position and retighten the support lock. To tilt table, loosen the bevel lock, tilt the table to desired position on the bevel scale and retighten bevel lock.
6. After drilling a hole, release the feed handle to have the spindle sleeve return to its original position.
7. In case of any trouble or abnormal noise arising during operation, stop the motor at once and identify the cause.
8. After operation, remove chips and dirt on the machine and cover all the unpainted surfaces with oil to prevent them from rusting. Turn off the power supply for safety.

EXTENSION CORD USE

1. Use only 'Listed' extension cords. If used outdoors, they must be marked "For Outdoor Use." Those cords having 3-prong grounding type plugs and mating receptacles are to be used with grounded tools.
2. Replace damaged or worn cords immediately.
3. Check the name plate rating of your tool. Use of improper size or gauge of extension cord may cause unsafe or inefficient operation of your tool. Be sure your extension cord is rated to allow sufficient current flow to the motor. For the proper wire gauge for your tool, see chart.

CHART FOR MINIMUM WIRE SIZE OF EXTENSION CORDS

Nameplate AMPS	Cord Length			
	25'	50'	100'	150'
0-6	18 AWG	16 AWG	16 AWG	14 AWG
6-10	18 AWG	16 AWG	14 AWG	12 AWG
10-12	16 AWG	16 AWG	14 AWG	12 AWG
12-16	14 AWG	12 AWG	(Not Recommended)	

If in doubt, use larger cord. Be sure to check voltage requirements of the tool to your incoming power source.

MAINTENANCE

⚠WARNING: For your own safety, turn switch Off and remove plug from power source outlet before maintaining or lubricating your mini drill press.

⚠WARNING: To avoid shock or fire hazard, if the power cord is worn, cut, or damaged in any way, have it replaced.

⚠WARNING: Make sure this tool is disconnected from its power source before attempting any maintenance, cleaning, or inspection.

1. Maintain your tools. It is recommended that the general condition of any tool be examined before it is used. Keep your tools in good repair by adopting a program of conscientious repair and maintenance in accordance with the recommended procedures found in this manual. If any abnormal vibrations or noise occurs, turn the tool off immediately and have the problem corrected before further use. Have necessary repairs made by qualified service personnel.
2. All of the ball bearings are packed with grease. They require no further lubrication. Periodically lubricate the table elevation mechanism and the grooves in the spindle. See "Getting to know your mini drill press" section of this manual.
3. Frequently blow out any dust that may accumulate inside the motor. A coat of automotive type paste wax applied to the table and column will help keep the surfaces clean.
4. Keep cutting tools sharp and clean. Properly maintained cutting tools with sharp cutting edges are less likely to bind and are easier to control. Keep handles dry, clean, and free from oil and grease.
5. Cleaning. Use only soap and a damp cloth to clean your tools. Many household cleaners are harmful to plastics and other insulation. Never let liquid get inside a tool.



5 SPEED MINI DRILL PRESS

TROUBLE SHOOTING

TROUBLE	PROBABLE CAUSE	REMEDY
Noisy operation.	<ol style="list-style-type: none"> 1. Incorrect belt tension. 2. Dry spindle. 3. Loose spindle pulley. 4. Loose motor pulley. 	<ol style="list-style-type: none"> 1. Adjust tension. 2. Lubricate spindle. 3. Check tightness of retaining nut on pulley and tighten if necessary. 4. Tighten setscrews in pulleys.
Drill bit burns.	<ol style="list-style-type: none"> 1. Incorrect speed. 2. Chips not coming out of hole. 3. Dull drill bit. 4. Feeding too slow. 5. Not lubricated. 	<ol style="list-style-type: none"> 1. Change speed. 2. Retract drill bit frequently to clear chips. 3. Resharpen drill bit. 4. Increase the speed. 5. Lubricate drill bit.
Drill bit leads off – hole not round.	<ol style="list-style-type: none"> 1. Hard grain in wood or lengths of cutting lips and/or angles are not equal. 2. Bent drill bit. 	<ol style="list-style-type: none"> 1. Resharpen drill bit correctly. 2. Replace drill bit.
Wood splinters on underside.	<ol style="list-style-type: none"> 1. No “back up material” under workpiece. 	<ol style="list-style-type: none"> 1. Use “back-up material”.
Workpiece turns loose from hand.	<ol style="list-style-type: none"> 1. Not supported or clamped properly. 	<ol style="list-style-type: none"> 1. Support workpiece or clamp it.
Drill bit binds in workpiece.	<ol style="list-style-type: none"> 1. Workpiece pinching drill bit or excessive feed pressure. 2. Improper belt tension. 	<ol style="list-style-type: none"> 1. Support workpiece or clamp it. 2. Adjust tension.
Excessive drill bit runout or wobble.	<ol style="list-style-type: none"> 1. Bent drill bit. 2. Worn spindle bearings. 3. Drill bit not properly installed in chuck. 4. Chuck not properly installed. 	<ol style="list-style-type: none"> 1. Use a straight drill bit. 2. Replace bearings. 3. Install drill bit properly. 4. Install chuck properly.
Quill returns too slow or too fast.	<ol style="list-style-type: none"> 1. Spring has improper tension. 	<ol style="list-style-type: none"> 1. Adjust spring tension.
Chuck will not stay attached to spindle or falls off when attempting to install.	<ol style="list-style-type: none"> 1. Dirt, grease or oil on the tapered inside surface of chuck or on the spindle’s tapered surface. 	<ol style="list-style-type: none"> 1. Using a household detergent, clean the tapered surface of the chuck and spindle to remove all dirt, grease and oil.

PARTS LIST AND DIAGRAM

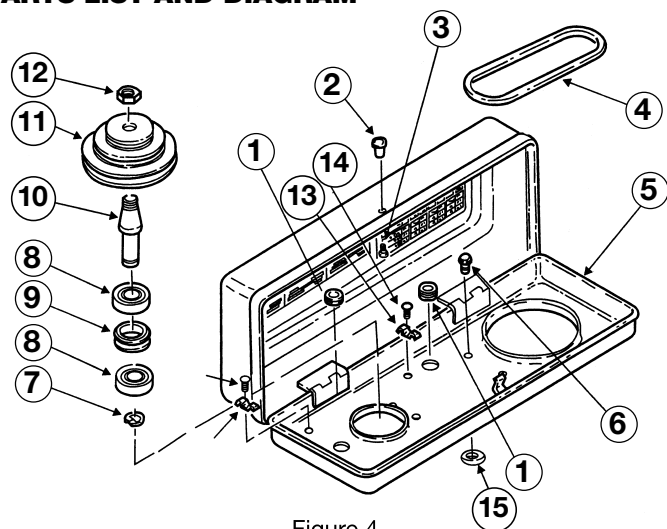


Figure 4

Key No.	Description
1	Rubber Bushing
2	Knob
3	Screw-Pan HD M5 x 0.8-1.2
4	V-Belt 5/16 x 26
5	Guard with Labels
6	Screw-Washer HD M6 x 1.0-1.6
7	Retaining Ring
8	Ball Bearing 17 mm
9	Spacer
10	Pulley Insert
11	Spindle Pulley
12	Nut-Pulley
13	Clamp Cord
14	Screw Pan HD M5 x 0.8-16
15	Foam Washer



5 SPEED MINI DRILL PRESS

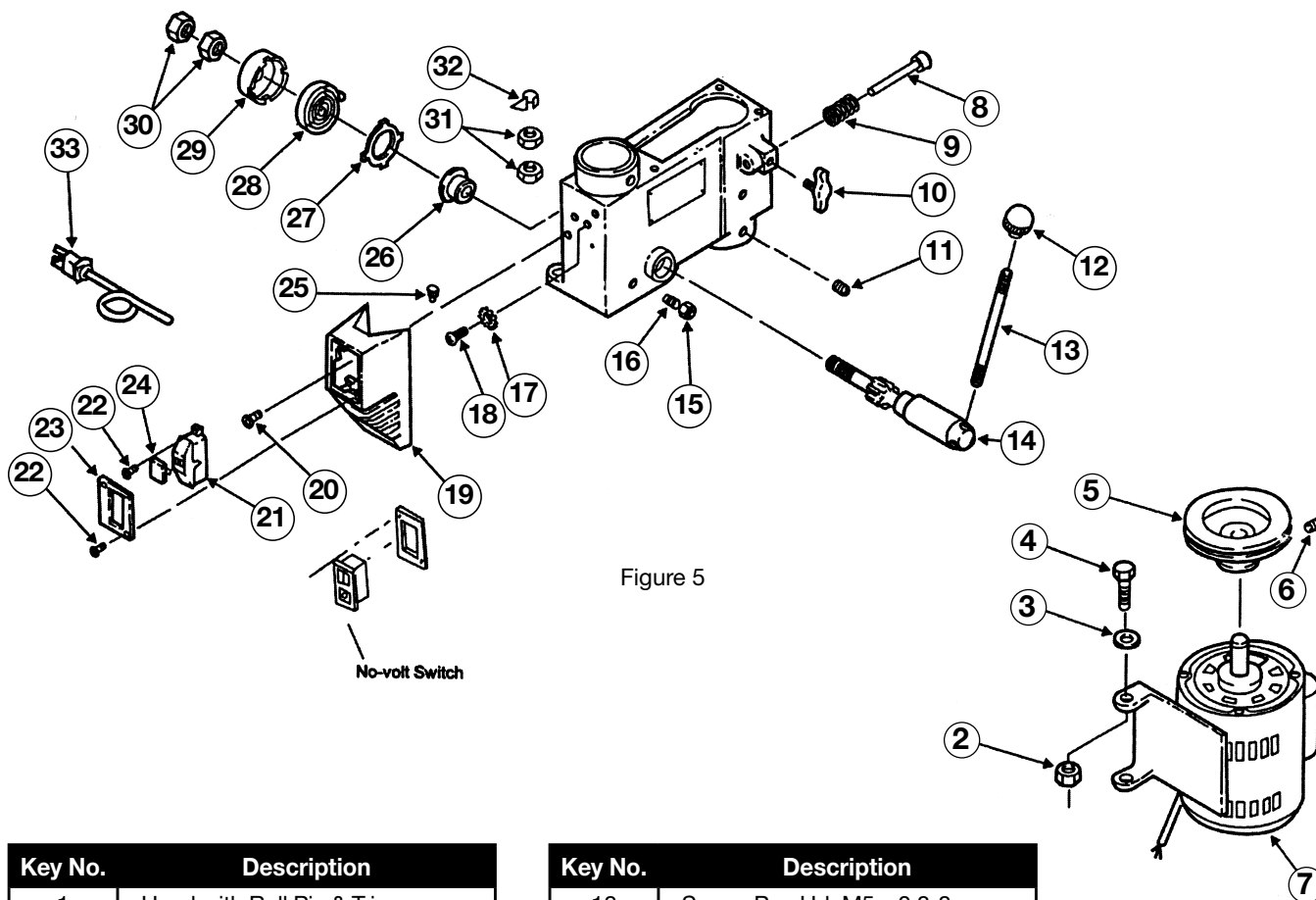


Figure 5

Key No.	Description
1	Head with Roll Pin & Trim
2	Nut-Lock M8 x 1.25-8
3	Washer
4	Screw-Hex M8 x 1.25-25
5	Motor Pulley
6	Screw-Hex Soc. Set M6 x 1.0-10
7	Motor
8	Stop-Motor
9	Spring-Motor Stop
10	Knob-Motor Adjusting
11	Screw-Hex Soc. Set M8 x 1.25-8
12	Knob
13	Rod
14	Shaft-Pinion
15	Nut-Hex M8 x 1.25
16	Screw-Flt. Sit. Set M8 x 1.25
17	Lockwasher-Ext. 5 mm

Key No.	Description
18	Screw-Pan Hd. M5 x 0.8-8
19	Box-Switchch with Depth Scale
20	Screw-Pan Cr. MS x 0.8-12
21	Switch-Locking
22	Screw-Self Tapping Pan HD M4x16-8
23	Cover-Switch Plate
24	Switch Key
25	Wire Connector
26	Seat Spring
27	Retainer Spring
28	Tension Spring
29	Cap Spring
30	Nut-Hex 3/8-24
31	Nut-Hex M10 x 1.5
32	Pointer
33	Power Cord

NOTE: The manufacturer declines any and all responsibility for damage to vehicles or components if said damage is the result of unskillful handling by the operator or of failure to observe the basic safety rules set forth in the instruction manual.

OEMTOOLS™ and/or its distributors have provided the parts list and assembly diagram as a reference only. Neither OEMTOOLS™ nor its distributors make any representation or warranty of any kind to the buyer and/or user of this tool that he or she is qualified to do any repairs or replace any parts of this product. OEMTOOLS™ and its distributors expressly state that all repairs or parts replacement should be done by certified or licensed technicians. The buyer assumes all risk and liability arising out of his or her repairs or parts replacement to the original production.



5 SPEED MINI DRILL PRESS

OEMTOOLS™ 90 DAY LIMITED WARRANTY

For up to 90 days from the original purchase of this OEMTOOLS™ product, if you find any defect in material or workmanship (through normal usage), return it to the place of purchase or to OEMTOOLS™ for repair or replacement at our discretion. In order to obtain this service, send your tool and proof of purchase (transportation pre-paid) to:

OEMTOOLS™ Q.A. Dept., 3580 Raines Road #3, Memphis, TN 38118.

We will not be responsible for lost or damaged goods during transportation; please insure your package. If our inspection verifies the defect, we will either repair or replace the product, or we may elect to refund the purchase price if we cannot readily and quickly provide you with a replacement. We will return repaired products at our expense, but if we determine there is no defect, or that the defect resulted from causes not within the scope of our warranty, then you must bear the cost of returning the product.

OEMTOOLS™ does not provide warranty for products labeled other than OEM® or OEMTOOLS™. OEMTOOLS™ will not provide any warranty for products subjected to abnormal use. Abnormal use includes (but is not limited to) abuse, accident, alteration, neglect, and unauthorized or unreasonable use or repairs. This warranty does not cover bits, blades, files, batteries, or calibration. We recommend that you maintain your tools and sharpen or replace blades, bits, files, and batteries as necessary. OEMTOOLS™ reserves the right to make any changes in construction or design at any time without any obligation in incorporating such changes to tools or equipment previously sold.

OEMTOOLS™ makes every effort to ensure that its products meet high quality and durability standards, and warrants to the original purchaser that this product is free from defects in materials and workmanship for the period of 90 days from the date of purchase. This warranty does not apply to damage due directly or indirectly to misuse, abuse, negligence or accidents, repairs or alterations outside our facilities, criminal activity, improper installation, normal wear and tear or to lack of maintenance.

We shall in no event be liable for death, injuries to persons or property, or for incidental, contingent, special or consequential damages arising from the use of our product. Some states do not allow the exclusion or limitation of incidental or consequential damages, so the above limitation of exclusion may not apply to you. THIS WARRANTY IS EXPRESSLY IN LIEU OF ALL OTHER WARRANTIES, EXPRESS OR IMPLIED, INCLUDING THE WARRANTIES OF MERCHANTABILITY AND FITNESS. This warranty gives you specific legal rights, and you may also have other rights, which vary from state to state.

Don't forget to register your new OEMTOOLS™ product at www.oem-tools.com.

CONTACT US

3580 E. Raines Road, Suite 3, Memphis, TN 38118
Tel: 1-866-458-2472
www.oem-tools.com